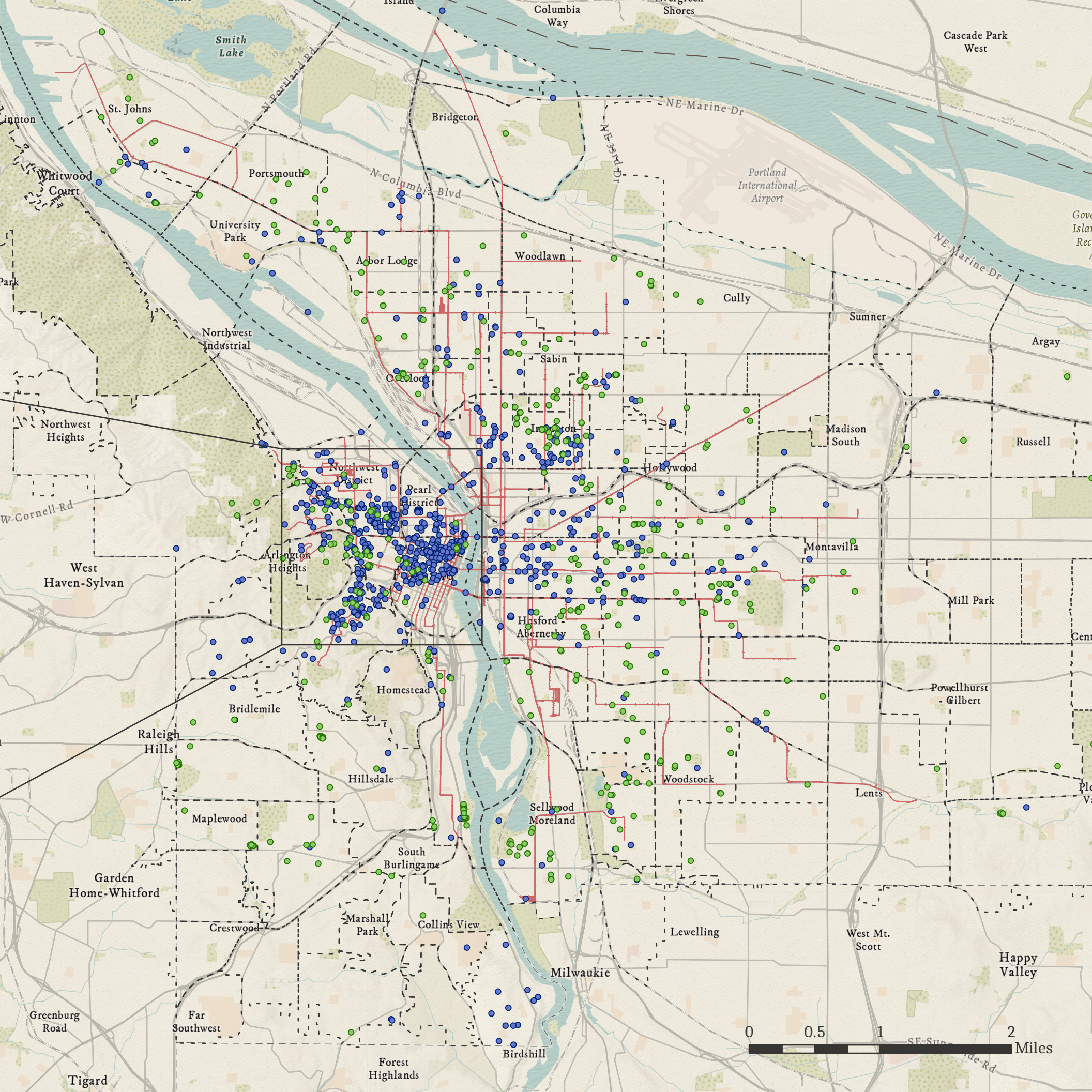
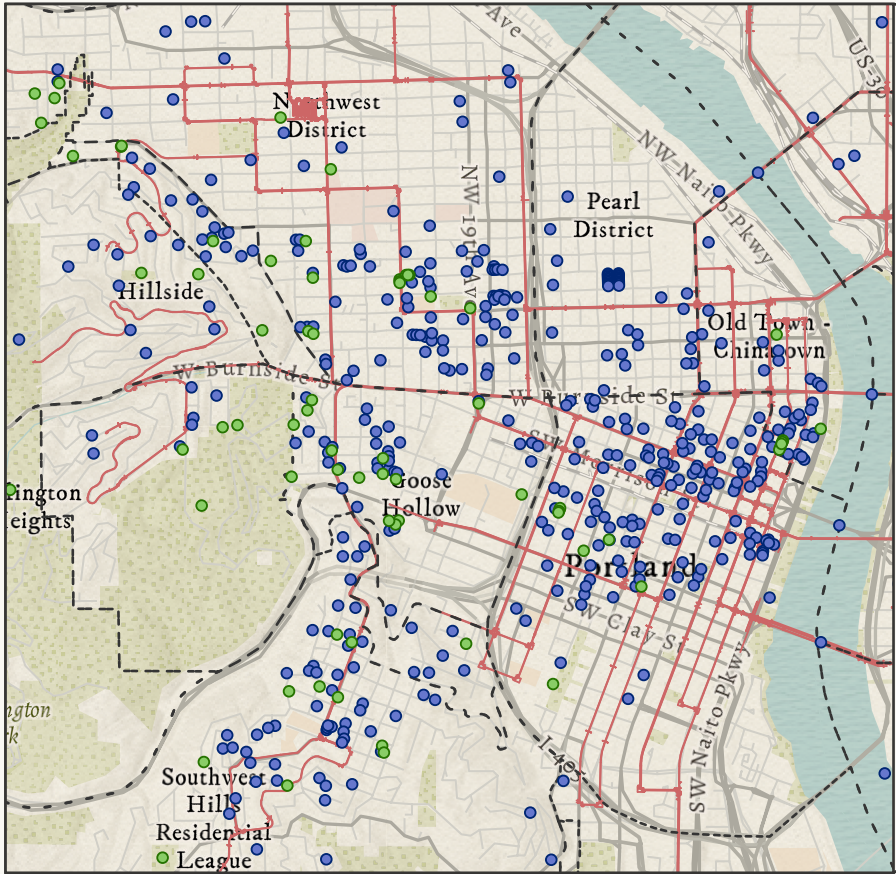
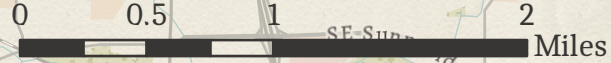


Historical Locations of Portland Oregon

The City of Portland, Oregon has a rich history since its founding in 1845. Many of these historical landmarks have been memorialized and still exist today for you to visit. Portland loves its trees, and maintains a collection of heritage trees that have been preserved for us to still enjoy as well. Take a trip down memory lane by following the historic trolley lines. Choose a line to follow through the city's and discover the history along them. Or, choose a Portland neighborhood and explore what historical locations still exist today.



- Historic Landmarks
- Heritage Trees
- Historic Trolley Routes
- Neighborhood Boundaries



Maps and layout created by Chance Morrison, February 2025
 Data Sources: Portland Maps Open Data (gis-pdx.opendata.arcgis.com)
 Basemap Sources: Esri, TomTom, Garmin, FAO, NOAA, USGS, © OpenStreetMap contributors, and the GIS User Community, Sources: Esri, Maxar, Airbus DS, USGS, NGA, NASA, CGIAR, N Robinson, NCEAS, NLS, OS, NMA, Geodatastyrelsen, Rijkswaterstaat, GSA, Geoland, FEMA, Intermap, and the GIS user community