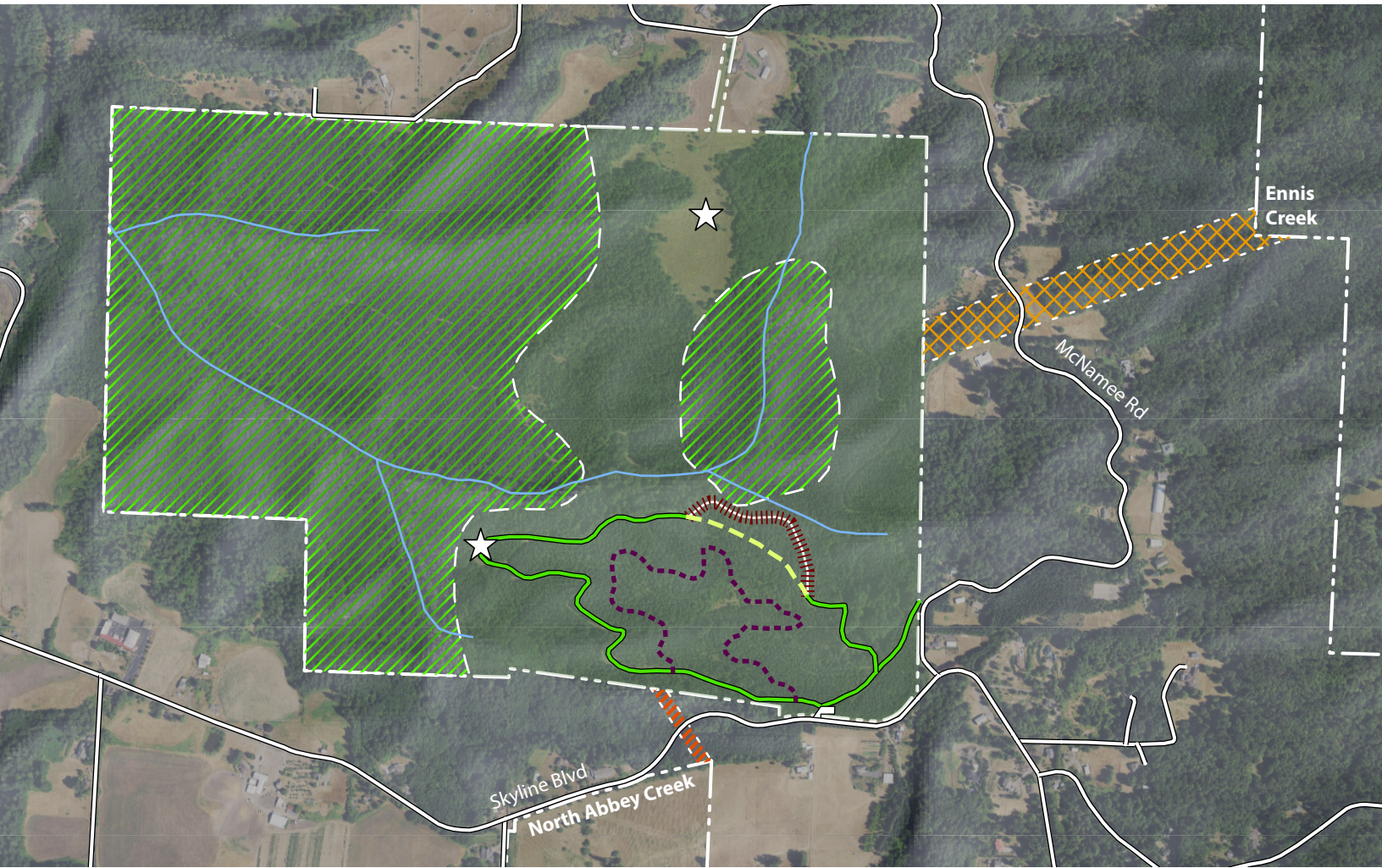


# McCARTHY CREEK PROPOSAL



## Park Features

☆ View Points

— Streams

□ Parking Lot

## Trail Types

||||| Decommision gravel road

— Existing gravel road - shared use

- - - Off-road cycling optimized trail

- - - Shared use trail

## Proposed Corridors

||||| Land Bridge

||||| Wildlife Corridor

## Land Designation

||||| Core Habitat

□ Park Land

## Wildlife Habitat Access

During open house discussions regarding the planning of conservation efforts by Metro in the acquired lands of the North Tualatin Mountains, community members shared their recommendations and concerns regarding the project. One prevalent topic was the protection of local wildlife in the development of these areas and continued access of these lands by local wildlife. While in these areas core habitat has been established for protection, private lands and roadways sperate these areas and restrict the movement of natural wildlife between them which can be attributed the the high rate of wildlife auto collisions in this area. To address this, we propose a land bridge to connect the McCarthy Creek and North Abbey Creek areas over Skyline Blvd and a wildlife corridor to connect the McCarthy Creek and Ennis Creek areas over McNamee Rd. As suburban development from Bethany expands farther into the north over the coming decades, it is important to have these natural areas and corridors established to protect local wildlife in the area.